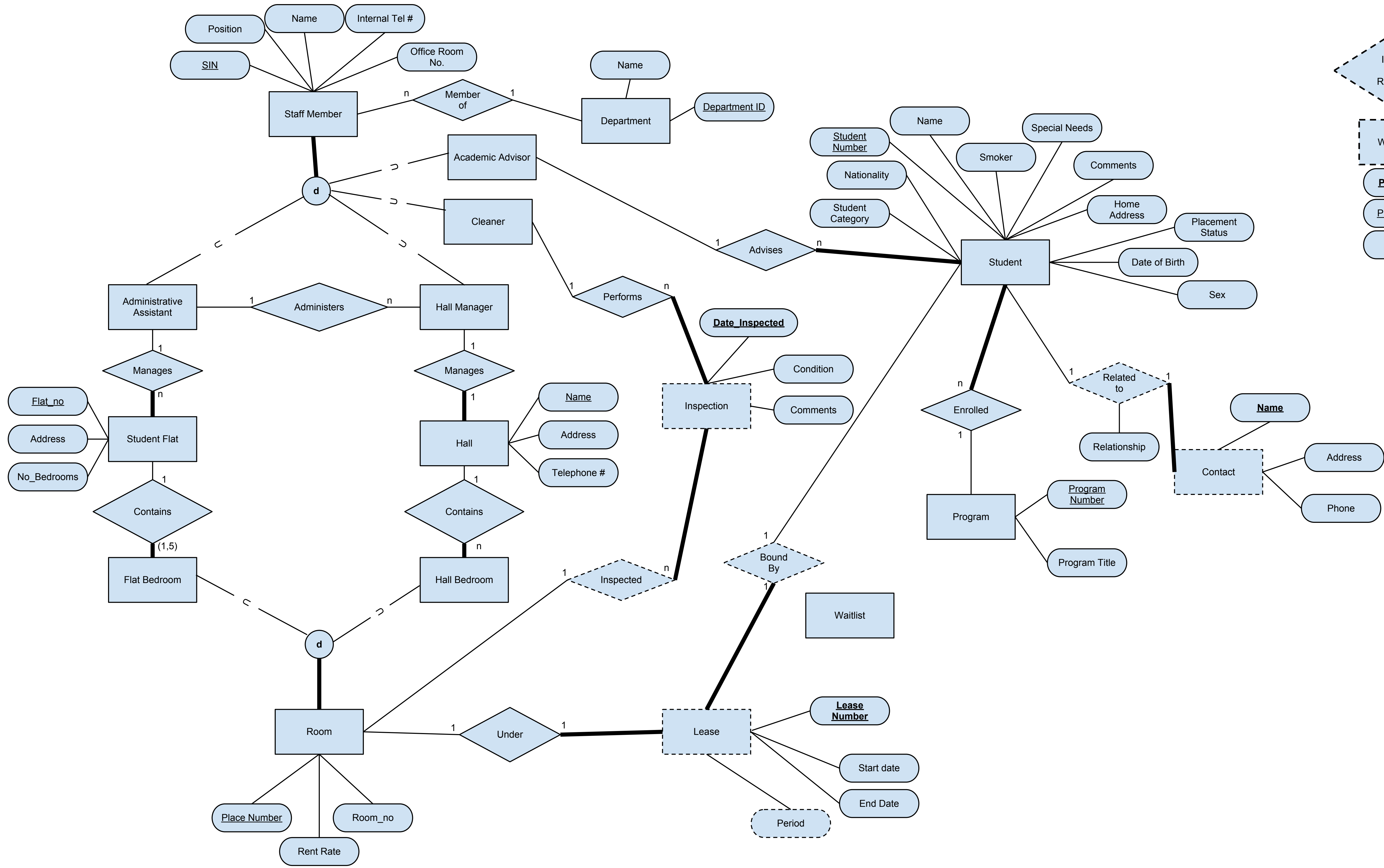


EER Diagram of University Accommodation Office Database



**Legend**

Due to formatting limitations please note:

- A solid line connecting an entity to a relation denotes full participation instead of the usual double line.
- A bold and underlined attribute denotes a partial key instead of the usual dotted underline
- A dashed entity box denotes a weak entity instead of the usual double lined box.
- A dashed relation diamond denotes an owner relationship of a weak entity

**Notes:**

- Minimum lease period is 15 weeks the maximum period is 52 weeks
- A flat may only contain 3 to 5 bedrooms
- A room's place number is unique across all rooms in halls and flats
- Lease history is not kept.
- Students must be enrolled in a program to apply for residence.